

Beautiful.

www.arkit.com.au
www.arkit.co.nz

Beautiful Design

ARKit is designed to be attractive and functional: the serenity of the linear, uniform and clean structures contrasts and complements the subtle variations of the natural materials.

ARKit possesses both stark and subtle charm: while the surfaces and lines of the building are unflinching, every panel has a unique hue, which evolves each day with the changing light, and further contrasts with the shadows playing across the surfaces from the edges and ridges of the buildings.

ARKit is a reinterpretation of building, architecture and living - referencing modernist aesthetics, while returning to natural materials and internal systems, and embracing outside context - classic, contemporary, innovative, progressive, thoughtful and beautiful.

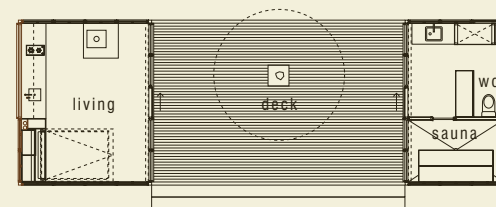
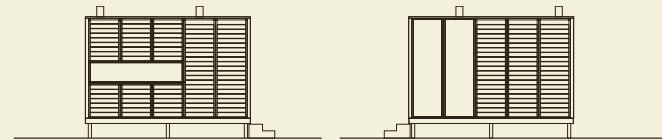
Beautiful Living

In your ARKit you dwell both in comfort and close to the splendour of your surrounds.

ARKit is scenic and serene: windows in multiple directions create a constant perception of both distant space and immediacy of the outdoors, a tranquil and wondrous sensation.

ARKit is a comfortable place to live: wood-fire heating, natural cooling, elegant bathing, refreshing sauna, outdoor areas, modern kitchen, natural water, air and light, secure shelter.

Imagine the pleasure of living in grace and comfort close to your land.



Bath House Great Western Victoria

This excellent example of charm, functionality and adaptability of an ARKit house (S Series) is sited on 20 acres of undulating bushland near the Victorian Grampians.

This home has been designed with three distinctive zones: the primary living; the secondary living (the outdoor deck); and the bathing area (the sauna). This residence deliberately provides for informality, quality of life, and the ongoing re-vegetation of the land.

The building has a minimal environmental footprint, collecting its own water and using onsite wood for heating (indoor living area and sauna). The wood supply is renewed and increased by ongoing revegetation of the land.

The sauna is a slow and luxurious experience - whether hot and steamy or warm and cosy - while the full height windows provide contrasting vistas of the external landscape and sky.

As with all ARKit buildings, it is built with the integrated panel system - combining exterior cladding, insulation and interior lining. Each panel is made of Western Red Cedar - a sustainably managed natural resource of exceptional beauty, built-in resistance to harsh environmental conditions, and inherent insulating properties.